

# Oracle Financial Services Profitability Management Applications Pack Installation and Configuration Guide

Version 8.0.2.0.0



## DOCUMENT CONTROL

Version Number	Revision Date	Changes Done
1.0	Created: Jan 2016	Captured 8.0.2.0.0 Minor Release installation procedure and configuratio details.
Created by: Arpana Danayak	Reviewed by: Mamatha Narayanareddy/ Usharani Shetty	Approved by: Avinash Neelkant/ Aravind Venketaraman/ Surag Ramachandran

### Executive Summary

This document includes the necessary instructions to apply 8.0.2.0.0 Minor Release for OFS Profitability Management Application Pack and perform the required post install configurations. You can find the latest copy of this document in [OTN Documentation Library](#).

# TABLE OF CONTENTS

<b>PREFACE .....</b>	<b>5</b>
Audience .....	5
Prerequisites for the Audience .....	5
How this Guide is Organized .....	5
Recommended Environment .....	6
Related Documents .....	6
Conventions and Acronyms .....	6
<b>1 OFS PROFITABILITY MANAGEMENT APPLICATION PACK MINOR RELEASE 8.0.2.0.0 .....</b>	<b>7</b>
1.1 Pre Installation Requirements .....	7
1.2 Pre Installation Activities .....	7
1.3 How to Apply This Minor Release? .....	9
1.3.1 Installing OFS Profitability Management Application Pack .....	9
1.4 Post Installation Configuration .....	11
1.4.1 Configure excludeURLList.cfg file .....	11
<b>APPENDIX A - INSTALLATION OF R AND ORACLE R ENTERPRISE (ORE) .....</b>	<b>12</b>
<b>APPENDIX B - FTP WEB SERVICE CONFIGURATION .....</b>	<b>13</b>
<b>APPENDIX C - DEPLOYING PROFITABILITY PACK DASHBOARDS AND ANALYTICS .....</b>	<b>16</b>
Installing OBIEE Server .....	16
Installing OBIEE Windows Administration Client .....	16
Disabling the Cache Feature in OBIEE Server .....	16
Deploying Profitability Pack Report Analytics .....	17
<b>APPENDIX D - STEPS FOR DEPLOYING D3 TO ENTITLEMENT SERVER .....</b>	<b>29</b>
<b>APPENDIX E – MAPVIEW CONFIGURATIONS .....</b>	<b>35</b>
Prerequisites .....	35
Creating the Mapviewer NAVTEQ Data source .....	35
Downloading the Mapviewer NAVTEQ Database Dump .....	35
Creating NAVTEQ User .....	35
Creating the NAVTEQ Schema .....	36
Configuration Edits and Server Starting .....	36
MapViewConfig.xml Edits (Optional) .....	36

Loading FSI\_LOCATION\_MAP\_COORD for viewing NAVTEQ Maps .....38

**APPENDIX F ..... 40**

Frequently Asked Questions.....40

## Preface

This document provides step-by-step instructions to install the OFS Profitability Management Application Pack 8.0.2.0.0 Minor Release.

This chapter discusses the following topics:

- [Audience](#)
- [How this Guide is organized](#)
- [Recommended Environment](#)
- [Conventions Used](#)

## Audience

Oracle Financial Services Profitability Application Pack Installation and Configuration Guide is intended for administrators, and implementation consultants who are responsible for installing and maintaining the application pack components.

## Prerequisites for the Audience

The document assumes that you have experience in installing Enterprise components and basic knowledge about the following is recommended.

The following are the expected preparations from the administrator before starting the actual installation:

- Oracle Financial Services Profitability Management Application pack components
- OFSAA Architecture
- UNIX Commands
- Database Concepts
- Web Server/ Web Application Server

## How this Guide is Organized

The Oracle Financial Services Profitability Management Application Pack Installation and Configuration Guide include the following topics:

- [OFS Profitability Management Release 8.0.2.0.0](#)
- [Appendix A](#)
- [Appendix B](#)
- [Appendix C](#)

- [Appendix D](#)
- [Appendix E](#)
- [Appendix F](#)

### Recommended Environment

OFSAA applications have been tested with Microsoft Internet Explorer™ browser. For best viewing of OFSAA Application pages, set the screen resolution to a minimum resolution of 1024 x 768 pixels.

### Related Documents

For more information, refer the Oracle Financial Services Profitability Management Pack 8.0.2.0.0 documents available in [OTN Documentation Library](#).

### Conventions and Acronyms

Conventions	Description
Actions are indicated in <b>Bold</b> .	
Command or query is indicated in <code>Courier New font</code> .	
AIX	Advanced Interactive eXecutive
OFS AAI	Oracle Financial Services Analytical Applications Infrastructure
OFS PFT	Oracle Financial Services Profitability Management
OFS FTP	Oracle Financial Services Funds Transfer Pricing
OFS EFPA	Oracle Financial Services Enterprise Financial Performance Analytics
OFS IPA	Oracle Financial Services Institutional Performance Analytics
OFA RPA	Oracle Financial Services Retail Performance Analytics
RHEL	Red Hat Enterprise Linux
ML	Maintenance Level
R	Third-party open source software. Open source R is governed by GNU General Public License (GPL).
Oracle R Distribution	Oracle R Distribution is Oracle's free distribution of open source R.
Oracle R Enterprise	Oracle R Enterprise integrates R, the open source scripting language and environment, with Oracle Database.

# 1 OFS Profitability Management Application Pack Minor Release 8.0.2.0.0

This Minor Release of OFS Profitability Management Application Pack is cumulative and includes all enhancements and bug fixes done since the OFS Profitability Management Application Pack v8.0.0.0.0 release.

## 1.1 Pre Installation Requirements

You should have OFS Profitability Management Application Pack version 8.0.0.0.0 as the minimum patch set level.

---

**NOTE:** Before Installation, you must change 8.0.0.0.0 to 8.0.2.0.0 in the *OFS\_PFT\_PACK.xml* file.

---

---

**NOTE:** You can refer to [Technology Matrix](#), for Hardware and Software Requirements. OFS Profitability Management 8.0.2.0.0 release qualifies on Java 7 and Java 8.

For PFT pack v8.0.2.0.2 one-off, 8.0.2.0.1 one-off is not a prerequisite.

---

## 1.2 Pre Installation Activities

### Pre-script Execution

The upgrade of Media Pack applications from 8.0 to 8.0.2 involves a Sliced Datamodel upload. This datamodel upgrade will have certain disruptive changes which will cause failure of installation if the affected tables have data. Hence, these disruptive changes have been handled through pre-script executions which will take backups of the existing tables and leave them empty for the sliced datamodel upload changes to happen seamlessly.

Hence, if the installer is chosen to be run without datamodel upload, the assumption is that the pre-scripts have been run manually on both Config and Atomic Schema, and the datamodel upload was triggered manually post these executions. This step is not necessary if the installer is chosen with datamodel upload.

As part of the installation process, the backup tables will later be used to update the original tables.

In case of an error in the process of installation, the pre-scripts need to be rolled back if you want to trigger the installation with datamodel upload. For this purpose, roll-back pre-scripts are also being provided in the same path as the released datamodel. This will contain two scripts - one for

config schema and another for atomic schema. Make sure that these rollback scripts are executed before the installation is triggered again after a failure.

If you are customizing the data model, then merge the data model and perform the incremental / sliced model upload (as it is a manual process) before installation, that is you need to perform pre-scripts to avoid execution failure messages during the installation.

If the model is customized, then change the setting parameter "MODEL\_TYPE=1" in params.conf file located under <##FOLDER##>OFS\_PFT\_PACK/OFS\_PFT/conf folder.

##FOLDER## is the location where the 8.0.2.0.0 installer has been copied.

If the model is customized and is required to upload the model manually, execute the below pre-scripts in atomic and config schema in below mentioned order before triggering the model upload  
Applications: CIIPA and CIRPA

Config Schema:

1. "ci\_fsusrd\_802\_config\_prescripts.sql"

Atomic Schema:

1. "pre\_RPA\_800\_802\_ddl.sql"
2. "dm\_avf\_prescripts\_ci\_802.sql"
3. "ci\_fsusrd\_802\_prescripts.sql"

The above files are located under <##FOLDER##>/OFS\_PFT\_PACK/OFS\_PFT/bin folder. ##FOLDER## is the location where the 8.0.2.0.0 installer has been copied.

**Note:** The above steps are same for CIIPA and CIRPA applications.

OFS Profitability Application pack v8.0.2.0.0 installer download contains only the ERwin XML file that is required for uploading the model. This file is sufficient to install the v8.0.2.0.0 Application pack. However, this XML file cannot be opened in the ERwin Data modeler tool and hence cannot be used for any data model customization. ERwin file is delivered as a patch and need to be downloaded separately. This ERwin file should be used for any customization of the data model.

To download the Data Model Erwin file, Login to <https://support.oracle.com/> and search for 23103107 under the Patches & Updates tab.

If you have done customizations on the 8.0.1 data model and after that installing patch 8.0.2 and downloading the 8.0.2 data model, then before uploading the same, customizations will have to be applied again.

### 1.3 How to Apply This Minor Release?

#### 1.3.1 Installing OFS Profitability Management Application Pack

Refer to the following instructions to download, extract, install, and configure this minor release.

1. Login to <https://support.oracle.com/> and search for **23054124** under the *Patches & Updates* tab.
2. Download the OFS Profitability Management Application Pack v8.0.2.0.0 archive file and copy it to your OFSAA server in **Binary** mode.

---

**NOTE:** The archive files are different for every operating system like AIX, Solaris, and RHEL/Oracle Linux.

---

3. Login to the OFSAA Server.
4. Shut down all the OFSAAI Services. For more information, refer to the *Start/Stop Infrastructure Services* section in [Oracle Financial Services Profitability Management Application Pack Installation Guide Release 8.0.0.0.0](#)
5. Execute the following command:  

```
chmod -R 750 $FIC_HOME
```
6. If you have Unzip utility, skip to the next step. Download the Unzip utility (OS specific) and copy it in **Binary** mode to the directory that is included in your PATH variable, typically **\$HOME** path or directory in which you have copied the 8.0.2.0.0 installer.

- Uncompress the unzip installer file using the command:

```
uncompress unzip_<os>.Z
```

---

**NOTE:** In case you notice an error message “**uncompress: not found [No such file or directory]**” when the package is not installed, contact your UNIX administrator.

---

- Give EXECUTE permission to the file using the command:

```
chmod 751 OFSPFT_80200_<OperatingSystem>.zip.
```

7. Extract the contents of the 8.0.2.0.0 archive file using the command:

```
unzip_<os> -a <name of the file to be unzipped>
```

---

**NOTE:** The above “-a” option is mandatory to unzip the archive file. For example:

```
unzip_aix -a OFSPFT_80200_<OperatingSystem>.zip
```

---

8. Update the parameters in params.conf file present in `/OFS_PFT_PACK/OFS_PFT/conf/` directory. The update instructions are present in the file itself.

9. Give EXECUTE permission to the minor release archive file. Navigate to the path `OFSPFT_80200_<OperatingSystem>.zip` and execute the command:

```
chmod 750 OFSAAIUpdate.sh
```

10. Execute **OFSAAIUpdate.sh** file using the following command.

```
./OFSAAIUpdate.sh
```

11. Download patch 23630711 from <https://support.oracle.com/> and follow the instructions mentioned in Readme of patch 23630711.

12. For more information on securing your OFSAA Infrastructure, refer to the Security Guide in [OTN Documentation Library](#).

13. After successful installation, follow these steps:

- Clear the application cache. Navigate to the following path depending on the configured web application server and delete the files.

- **Tomcat:**

<Tomcat installation folder>/work/Catalina/localhost/<Application name>/org/apache/jsp

- **Weblogic:**

<Weblogic installation location>/domains/<Domain name>/servers/<Server name>/tmp/\_WL\_user/<Application name>/<auto generated folder>/jsp\_servlet

- **Websphere:**

<Websphere installation directory>/AppServer/profiles/<Profile name>/temp/<Node name>/server1/<Application name>/<.war file name>

14. Add umask 0027 in the `.profile` of the UNIX account which manages the WEB server to ensure restricted access permissions.
15. Perform the necessary additional configuration as mentioned in [Appendix A](#), [Appendix B](#), [Appendix C](#), and [Appendix D](#).
16. Generate the application EAR/WAR file and redeploy the application onto your configured web application server. For more information on generating and deploying EAR / WAR file, refer to the *Post Installation Configuration* section in [Oracle Financial Services Profitability Management Application Pack Installation Guide Release 8.0.0.0.0](#)
17. After the successful installation of the release, restart all the OFSAAI services. For more information, refer to the *Start/Stop Infrastructure Services* section in [Oracle Financial Services Profitability Management Application Pack Installation Guide Release 8.0.0.0.0](#).

### 1.4 Post Installation Configuration

#### 1.4.1 Configure excludeURLList.cfg file

Configure `excludeURLList.cfg` file, follow these steps:

1. Locate the webserver deployed area `webroot/conf/excludeURLList.cfg` file.
2. Modify the following entries:
  - `[SQLIA]./dataIntegrator/` to `[ALL]./dataIntegrator/`
  - `[SQLIA]./ETLExtractionServlet` to `[ALL]./ETLExtractionServlet`
3. Save the changes and restart the webserver.
4. Resave the definition.

### Appendix A - Installation of R and Oracle R Enterprise (ORE)

This is an optional step and required only if you intend to use Term Structure Parameter Estimation functionality under Rate Management – Interest Rates, for computing term structure parameters. Both Funds Transfer Pricing and Asset Liability Management applications require term structure parameters for all monte carlo engine based calculations (OAS, VaR and EaR).

Following are the prerequisites:

- Install R and Oracle R Enterprise Server on the Oracle Database server. Refer to [https://docs.oracle.com/cd/E57012\\_01/doc.141/e57007.pdf](https://docs.oracle.com/cd/E57012_01/doc.141/e57007.pdf)
- ORE version supported - Oracle R Enterprise (Server) version 1.4.1

#### Configuration for Oracle R Enterprise

Grant the RQADMIN role to atomic schema.

You can grant the `rqadmin` role in SQL\*Plus by logging in to the database with DBA privileges and provide the following privilege to Atomic Schema:

```
RQADMIN by executing the command:  
GRANT RQADMIN TO < atomic_schema>;
```

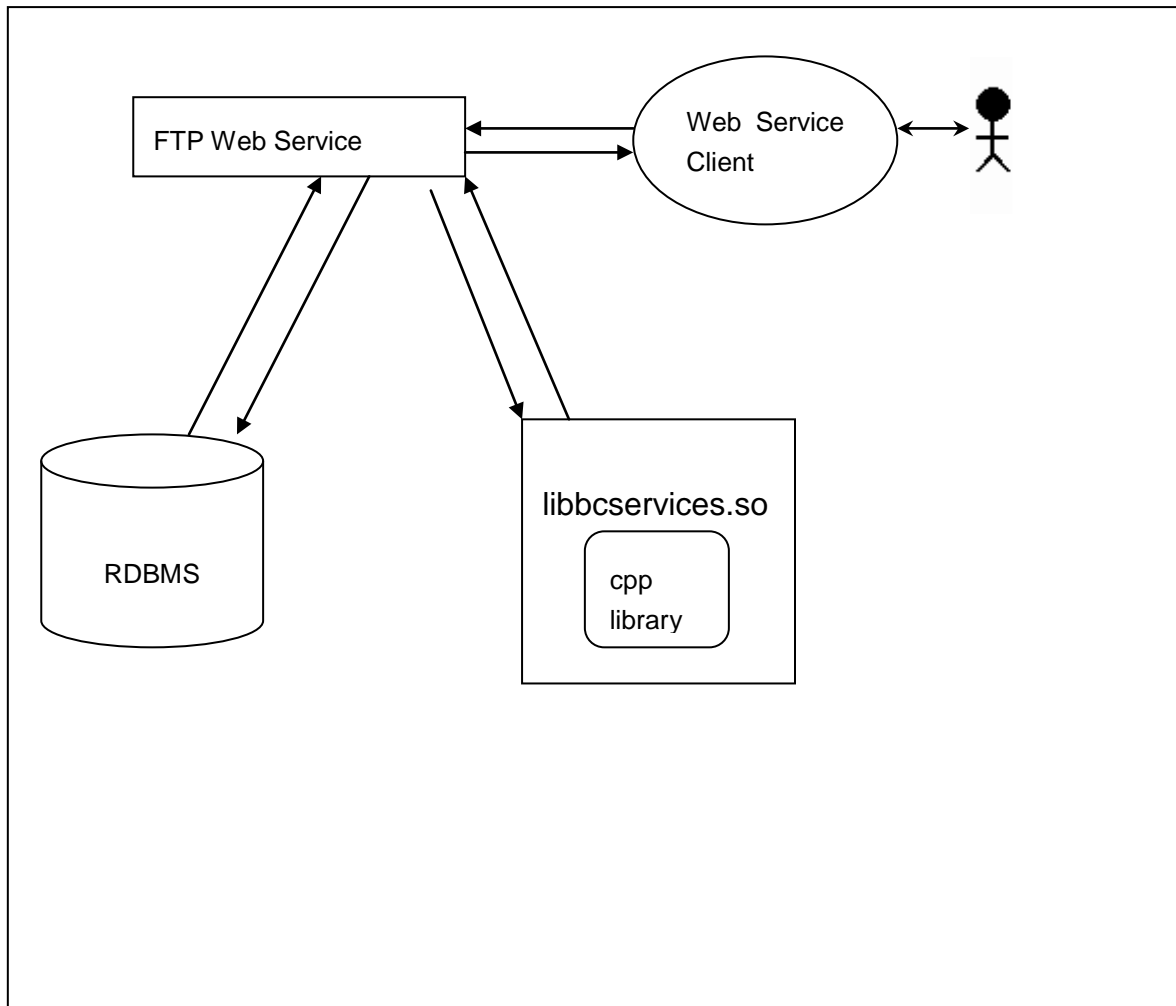
## Appendix B - FTP Web Service Configuration

The following installation activity describes how to setup FTP web services to support the Breakage Charge Economic Loss calculation. The calculation logic is the same as the FTP Adjustment Rule Breakage Charge calculation. This FTP Economic Loss WebService is now independent of EXEWebService. Note, other FTP web services are installed automatically and require no further setup.

### Approach

The FTP Web services are designed as a wrapper which will call the FTP Engine for the calculation of Economic Loss. The FTP Web Service is available in its own context and has a specific WSDL for that context.

### Architecture



### Pre-requisites

- For WebLogic and WebSphere, Datasource should be present with JNDI name as jdbc/FTPWS.
- For Tomcat a separate context entry should be present in server.xml file.

### Log4j configuration

log4j.properties file is already present inside WEB-INF/classes folder of the war file. Logs will be generated inside \$root\_directory\_of\_war/logs/webService.log file.

### Setup Environment variable - ofsaaws.properties

ofsaaws.properties file is available in WEB-INF/classes folder. Specify the cpp\_component name. Place the component **libbcservices.so** under /ficdb/lib/libFSGBU. Add the library location to LD\_LIBRARY\_PATH.

---

**NOTE:** If Webservices are deployed in an environment other than where OFSAA is deployed, then copy /ficdb/lib/libFSGBU to webservices environment and set in LIBRARY path.

---

- cpp\_component=libbcservices.so(libbcservices.o)----for AIX
- cpp\_component=bcservices ----for Solaris
- cpp\_component=bcservices ----for linux

### Creating FTPWebServiceAXIS.war

1. Go to the server path in which the application is running.  
For Example: \$FIC\_HOME/FTPWebService
2. Run "ant.sh" in this folder. FTPWebServiceAXIS.war will be created in the same folder.

### Deploying FTPWebServiceAXIS.war

#### For Tomcat:

1. Copy the above WAR file to the webapps folder of apache tomcat directory.
2. Go to conf folder of apache tomcat and add a separate context entry in server.xml file with resource name as jdbc/FTPWS.

Example:

```
<Context      path="/FTPWebServiceAXIS"      docBase="/<Tomcat_webapps>
/FTPWebServiceAXIS" debug="0" reloadable="false" crossContext="true">

<Resource auth="Container"

    name="jdbc/FTPWS"

    type="javax.sql.DataSource"

    driverClassName="oracle.jdbc.driver.OracleDriver"

    username="username"

    password="password"

    url="jdbc:oracle:thin:@db-ip:dp-port:dbname"
```

```
maxActive="100"  
maxIdle="30"  
maxWait="10000"  
removeAbandoned="true"  
removeAbandonedTimeout="60"  
logAbandoned="true"/>
```

```
</Context>
```

3. Restart the server.

### For Weblogic and Websphere:

1. Deploy **FTPWebServiceAXIS.war** from admin console.
2. Create datasource for database connection with JNDI name as jdbc/FTPWS.
3. WSDL is present at following URL.  
<http://ipaddress:port/FTPWebServiceAXIS/services/OFSAAFTPService?wsdl>

## Appendix C - Deploying Profitability Pack Dashboards and Analytics

### Installing OBIEE Server

To install Oracle Business Intelligence Enterprise Edition (OBIEE) server, refer to Oracle Fusion Middleware Installation Guide for Oracle Business Intelligence 11g Release 1 (11.1.1). After installing Oracle Business Intelligence Enterprise Edition (OBIEE) server, get the Enterprise Manager URL, username, password, and OBIEE installed directory from the System Administrator.

**Note:** Once the OBIEE server is installed, it should be upgraded to the version as mentioned in the Environment section.

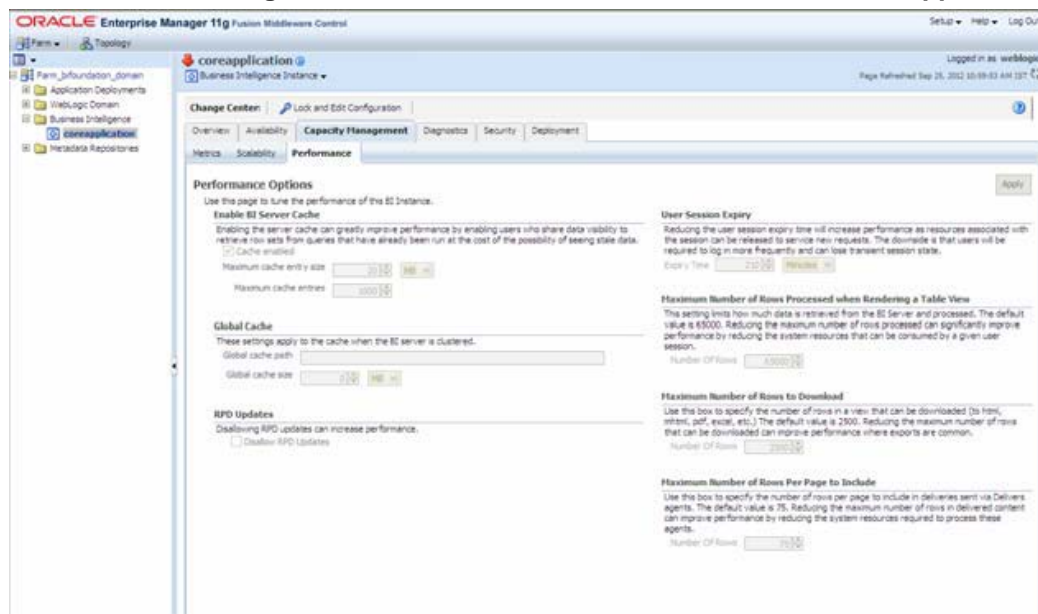
### Installing OBIEE Windows Administration Client

To install OBIEE repository administration client for Windows machine, refer to Oracle® Fusion Middleware Installation Guide for Oracle Business Intelligence 11g Release 1 (11.1.1).

### Disabling the Cache Feature in OBIEE Server

Login to Enterprise Manager, and perform the following steps:

1. Click **Business Intelligence** folder from left hand side menu and select **coreapplication**.



**Figure 1: OBIEE Windows Administration Screen to Disable the Cache**

2. Click on Capacity Management tab.
3. Select Performance tab.
4. Click Lock and Edit Configuration tab.
5. Uncheck the Cache Enabled option to disable the cache.

## Deploying Profitability Pack Report Analytics

To deploy Analytic Reports, follow these steps:

1. Stop Oracle Process Manager and Notification Server (OPMN) services by executing the following command:

```
<OBIEE Installed Directory>/instances/instance1/bin  
./opmnctl stopall
```

2. Copy OFS\_PFT\_PACK.rpd from \$FIC\_HOME/OFSPFTPACKBI/OBIEE11G of Web layer to windows machine where the OBIEE windows administration client is installed.

**Note:** The RPD/Catalog for version 7.1 and 9.5 are packaged within different folders in the installer.

3. To change the default password for the repository, follow these steps:
  - a. Open the repository using OBIEE Windows administration client.

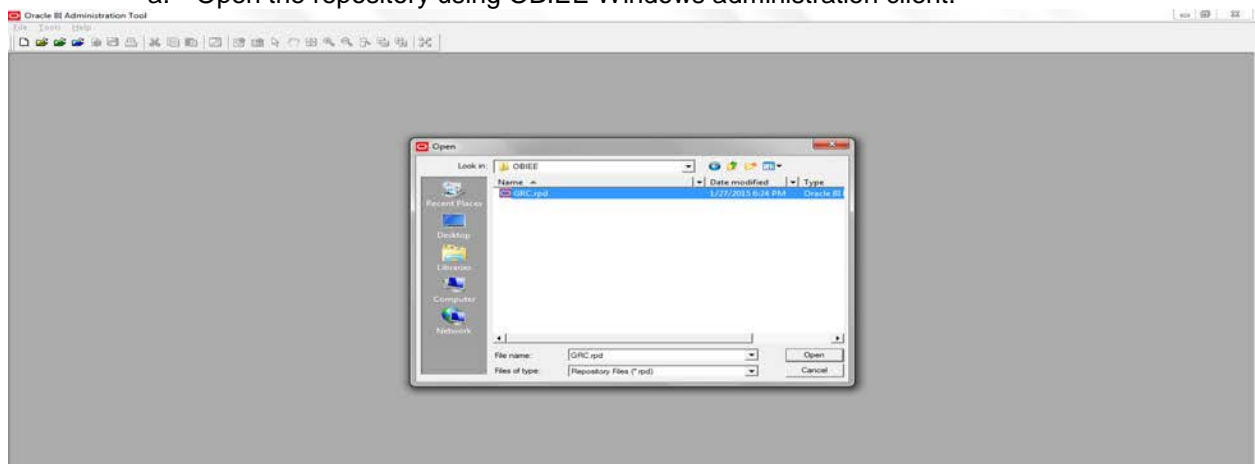


Figure 1: OBIEE Windows Administration Client to Open Repository

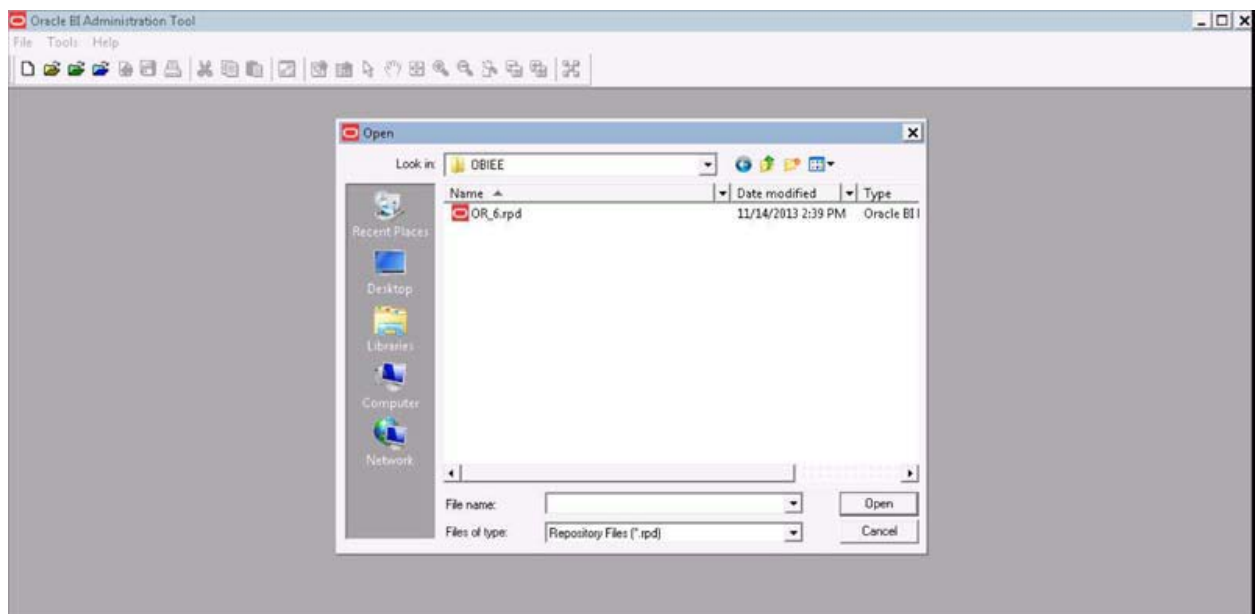
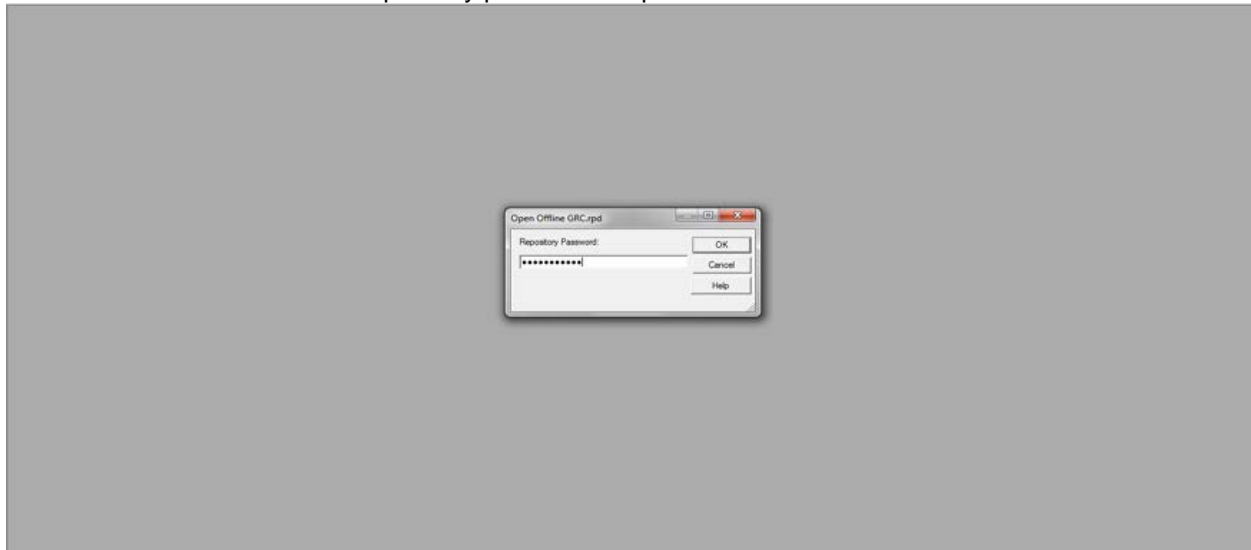


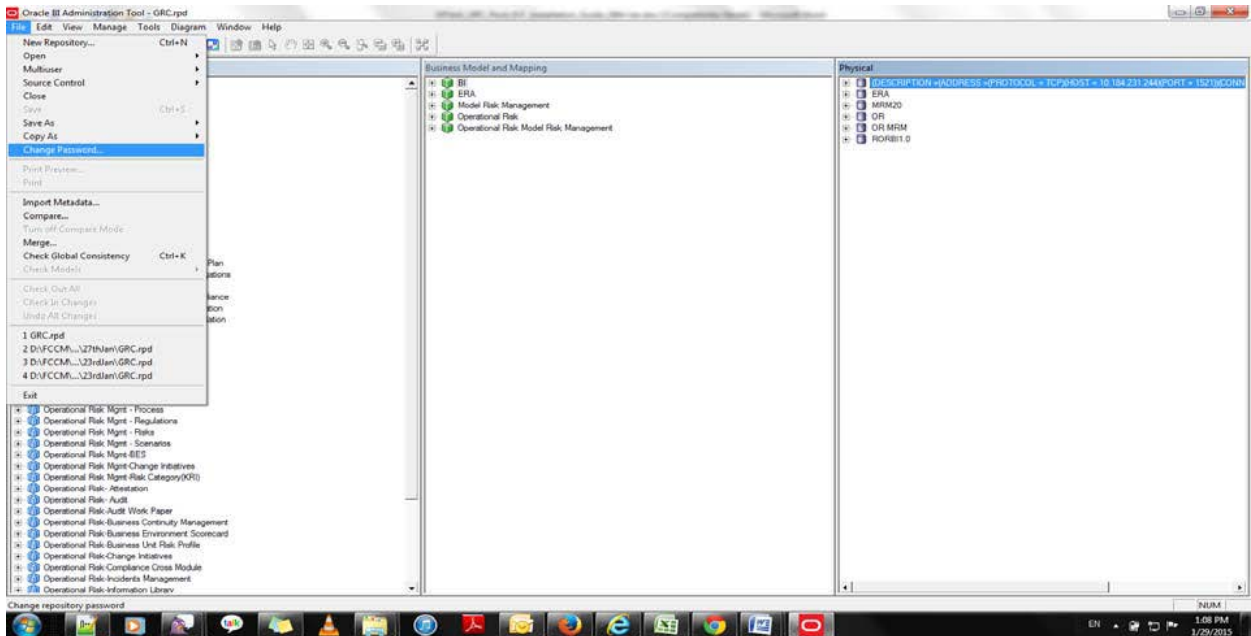
Figure 2: OBIEE Windows Administration Client to Select Repository from Windows Machine

- b. Enter default repository password as password123.



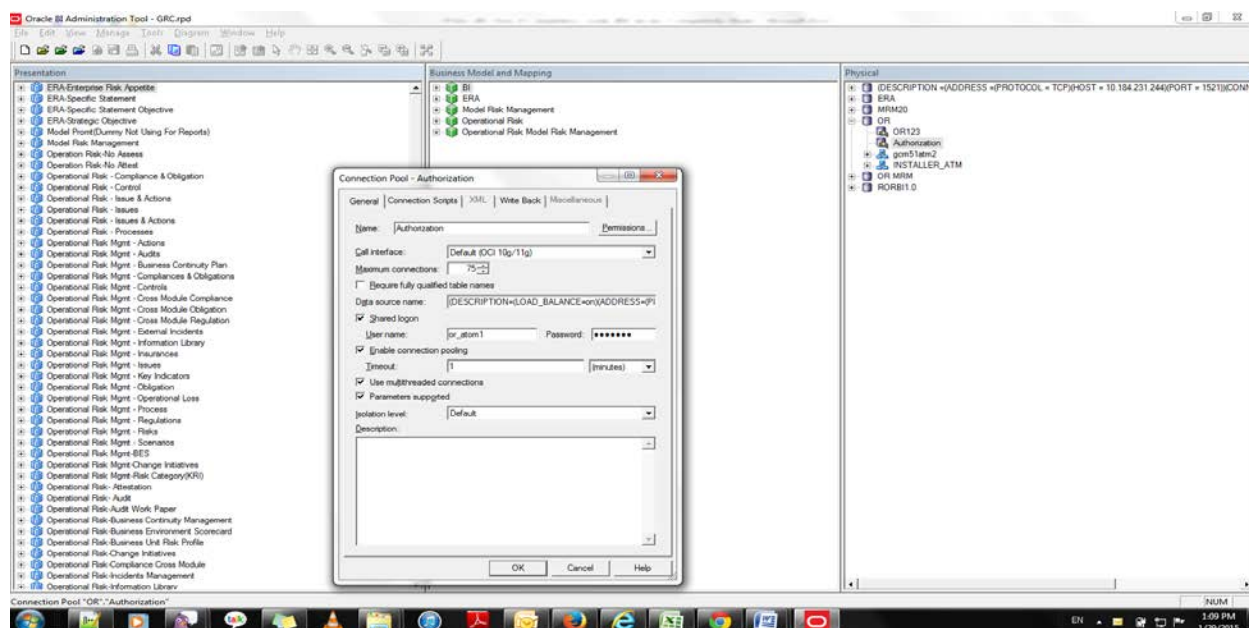
**Figure 3: OBIEE windows Administration Client to enter Repository Default Password**

- c. Click **File** menu, select **Change Password**.



**Figure 4: OBIEE Windows Administration Client to Change the Password of Repository**

4. Enter the new password. Click **OK**.
5. To configure connection pool of repository, follow these steps:
  - a. In the physical section, expand OR folder.



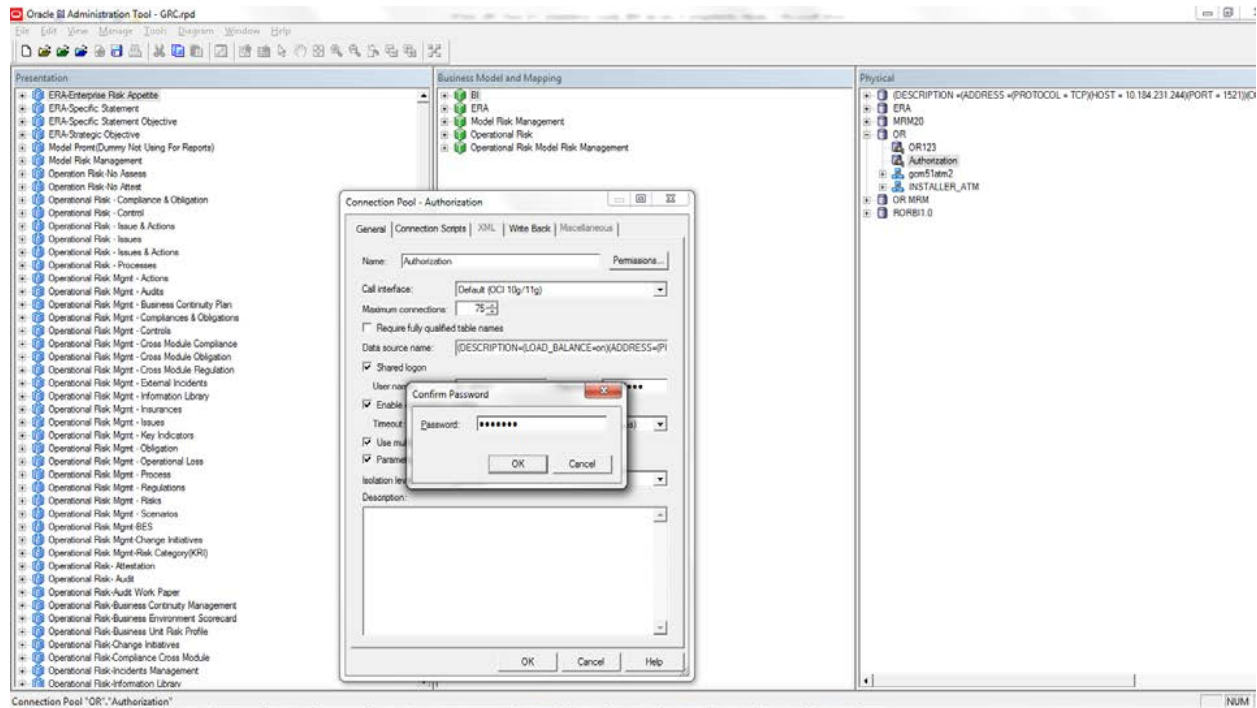
**Figure 5: OBIEE Windows Administration Client to Open Connection Pool Window**

- b. Double-click **Authorization Connection Pool** to open the Connection Pool Properties window.
- c. Enter the following in *Data Source Name* text box of Connection Pool Properties window after modifying

<Database Server Host Name> and <Database Name>

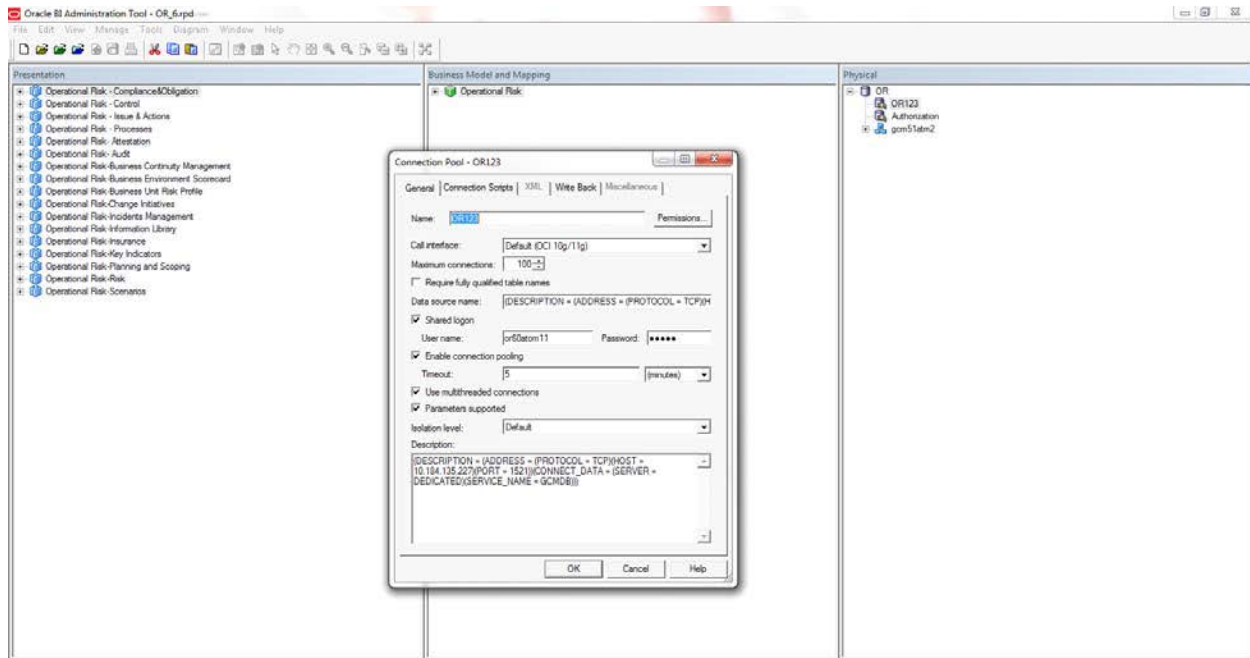
```
(DESCRIPTION=(ADDRESS=(PROTOCOL=TCP)(HOST=<Database Server Host
Name>)(PORT=1521))(CONNECT_DATA=(SERVER=DEDICATED)(SERVICE_NAME=<Databa
se Name>)))
```

- d. Enter atomic schema user in **User name** text box.
- e. Enter atomic schema user password in **Password** text box.
- f. Click **OK**.



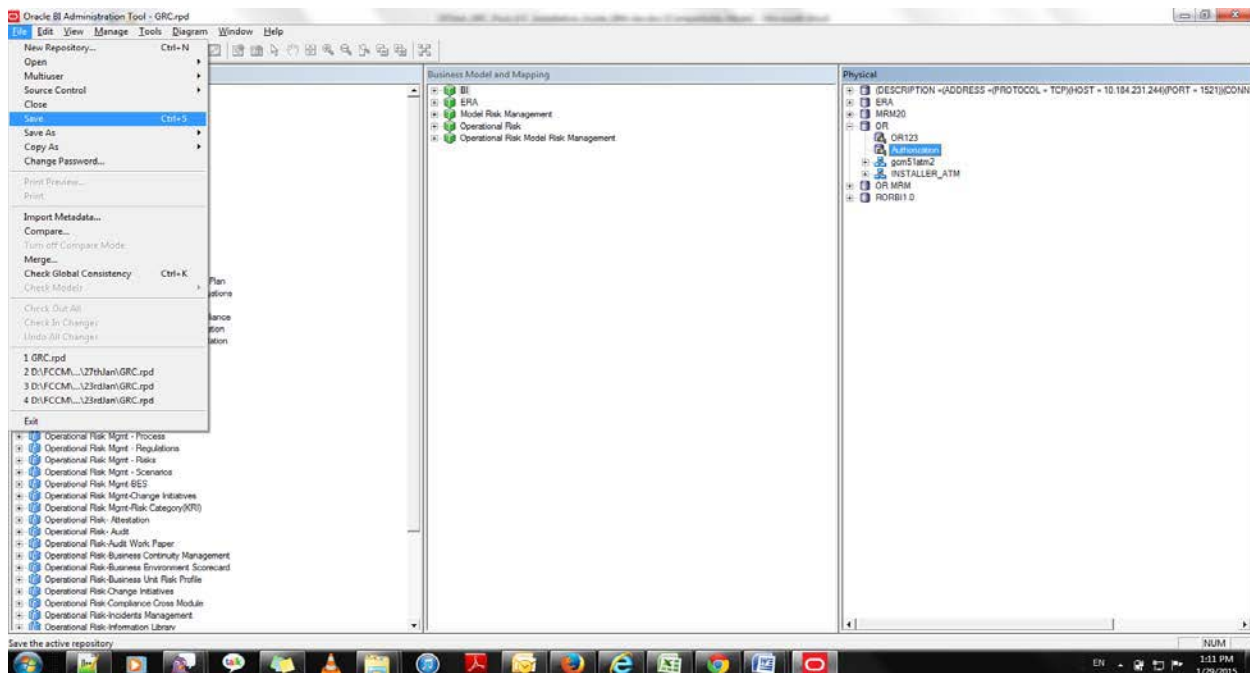
**Figure 6: OBIEE Windows Administration Client to modify Connection Pool variables**

- g. Double-click **OR123** to open the Connection Pool window (Figure 8).
- h. Enter the following in **Data Source Name** text box of Connection Pool-VAR\_CONN\_POOL properties window after modifying  
`<Database Server Host Name> and <Database Name>`  
`(DESCRIPTION=(ADDRESS=(PROTOCOL=TCP)(HOST=<Database Server Host Name>)(PORT=1521))(CONNECT_DATA=(SERVER=DEDICATED)(SERVICE_NAME=<Database Name>)) (PORT=1521)) (CONNECT_DATA=(SERVER=DEDICATED)(SERVICE_NAME=<Database Name>))`
- i. Enter atomic schema user in **User name** text box.
- j. Enter atomic schema password in **Password** text box.
- k. Click **OK**.



**Figure 7: OBIEE Windows Administration Client to modify Connection Pool-VAR\_CONN\_POOL variables**

6. Click **File** menu and then click **Save**.



**Figure 8: OBIEE Windows Administration Client to save Repository changes**

7. Click **Yes** on the pop-up message Do you want to check global consistency?

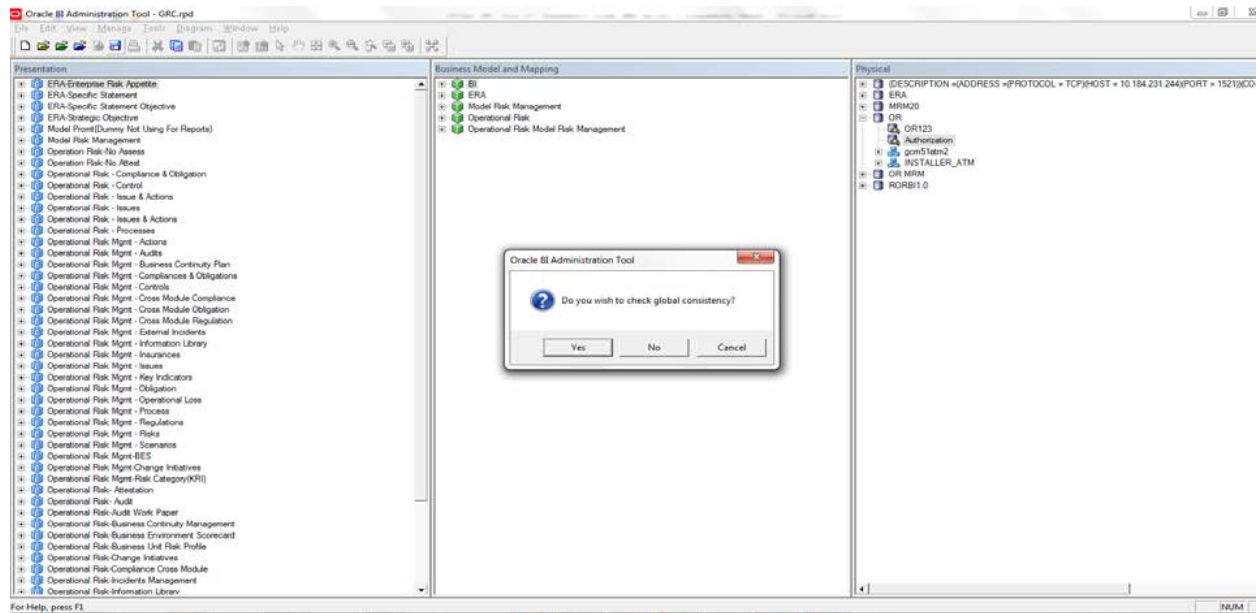


Figure 9: OBIEE Windows Administration Client to check global consistency

- Click **OK**, on the pop-up message Consistency check didn't find any errors, warning or best practices violations.

**Note:** Warnings on consistency check can be ignored.

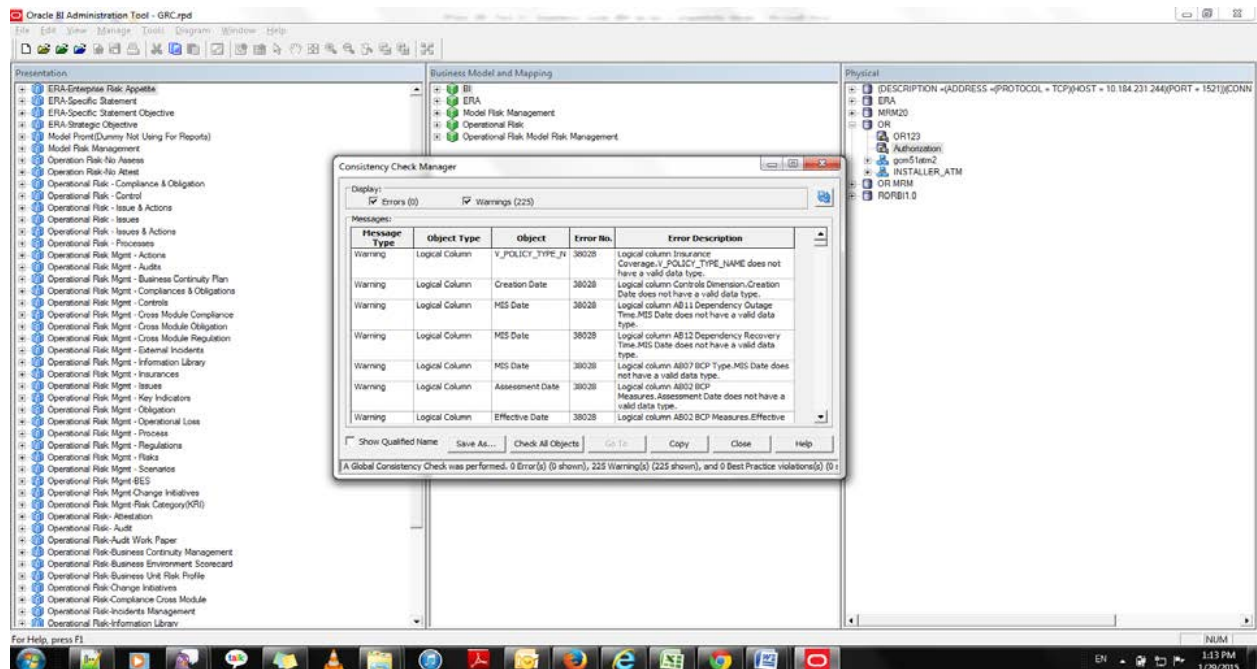


Figure 10: OBIEE Windows Administration Client with global consistency checking message

### List of Warning Messages:

Business Model Financial Reporting:

[39090] Logical column "Financial Reporting"."Dim - Reporting Period"."Month" has invalid Sort Order column 'Month Sort'.

Business Model Management Reporting:

[39090] Logical column "Management Reporting"."Dim - Reporting Period"."Year" has invalid Sort Order column 'Year Calendar'.

GLOBAL:

[39092] Presentation level "Retail Performance".. "Branch"."Branch Hierarchy"."Region" is first under presentation hierarchy, but logical level it is associated with is not grand total level.

[39092] Presentation level "Retail Performance".. "Time"."Time Hierarchy"."Year" is first under presentation hierarchy, but logical level it is associated with is not grand total level.

[39092] Presentation level "Retail Performance".. "Product"."Product Hierarchy"."Leve20" is first under presentation hierarchy, but logical level it is associated with is not grand total level.

[39092] Presentation level "Income Statement".. "Reporting Period"."Time\_Hierarchy\_Month"."Month" is first under presentation hierarchy, but logical level it is associated with is not grand total level.

[39092] Presentation level "Income Statement".. "Reporting Period"."Time Hierarchy Year\_Month"."Year" is first under presentation hierarchy, but logical level it is associated with is not grand total level.

[39092] Presentation level "Financial Ratios".. "Reporting Period"."Time\_Hierarchy\_Month"."Month" is first under presentation hierarchy, but logical level it is associated with is not grand total level.

[39092] Presentation level "Financial Reporting".. "Reporting Period"."Time Hierarchy Month"."Month" is first under presentation hierarchy, but logical level it is associated with is not grand total level.

[39092] Presentation level "Financial Reporting".. "Reporting Period"."Time Hierarchy Year\_Month"."Year" is first under presentation hierarchy, but logical level it is associated with is not grand total level.

[39092] Presentation level "Balance Sheet".. "Reporting Period"."Time\_Hierarchy\_Month"."Month" is first under presentation hierarchy, but logical level it is associated with is not grand total level.

[39092] Presentation level "Financial Reporting".. "Reporting Period"."Time Hierarchy"."Year" is first under presentation hierarchy, but logical level it is associated with is not grand total level.

[39092] Presentation level "Institutional Performance".. "Time"."Time Hierarchy"."Year" is first under presentation hierarchy, but logical level it is associated with is not grand total level.

[39092] Presentation level "Financial Ratios".. "Reporting Period"."Time Hierarchy"."Year" is first under presentation hierarchy, but logical level it is associated with is not grand total level.

[39092] Presentation level "Income Statement".. "Reporting Period"."Time Hierarchy"."Year" is first under presentation hierarchy, but logical level it is associated with is not grand total level.

[39092] Presentation level "Balance Sheet".. "Reporting Period"."Time Hierarchy"."Year" is first under presentation hierarchy, but logical level it is associated with is not grand total level.

[39092] Presentation level "Balance Sheet Planing".. "Account". "Account". "Gen2,Account" is first under presentation hierarchy, but logical level it is associated with is not grand total level.

[39092] Presentation level "Balance Sheet Planing".. "Period". "Period". "Gen2,Period" is first under presentation hierarchy, but logical level it is associated with is not grand total level.

[39092] Presentation level "Balance Sheet Planing".. "Years". "Years". "Gen2,Years" is first under presentation hierarchy, but logical level it is associated with is not grand total level.

[39092] Presentation level "Balance Sheet Planing".. "Scenario". "Scenario". "Gen2,Scenario" is first under presentation hierarchy, but logical level it is associated with is not grand total level.

[39092] Presentation level "Balance Sheet Planing".. "Entity". "Entity". "Gen2,Entity" is first under presentation hierarchy, but logical level it is associated with is not grand total level.

[39092] Presentation level "Balance Sheet Planing".. "Version". "Version". "Gen2,Version" is first under presentation hierarchy, but logical level it is associated with is not grand total level.

[39092] Presentation level "Balance Sheet Planing".. "Strategy". "Strategy". "Gen2,Strategy" is first under presentation hierarchy, but logical level it is associated with is not grand total level.

[39092] Presentation level "Balance Sheet Planing".. "Chart of Account". "Chart of Account". "Gen2,Chart of Account" is first under presentation hierarchy, but logical level it is associated with is not grand total level.

[39092] Presentation level "Balance Sheet Planing".. "AttributeValue". "AttributeValue". "Gen2,AttributeValue" is first under presentation hierarchy, but logical level it is associated with is not grand total level.

[39092] Presentation level "Balance Sheet Planing".. "Currency". "Currency". "Gen2,Currency" is first under presentation hierarchy, but logical level it is associated with is not grand total level.

[39092] Presentation level "Balance Sheet Planing".. "Intercompany Entity Flag". "Intercompany Entity Flag". "Gen2,Intercompany Entity Flag" is first under presentation hierarchy, but logical level it is associated with is not grand total level.

[39092] Presentation level "Balance Sheet Planing".. "AssetClass". "AssetClass". "Gen2,AssetClass" is first under presentation hierarchy, but logical level it is associated with is not grand total level.

[39092] Presentation level "Balance Sheet Planing".. "COA type". "COA type". "Gen2,COA type" is first under presentation hierarchy, but logical level it is associated with is not grand total level.

[39092] Presentation level "Balance Sheet Planing".. "DelinquenciesExp". "DelinquenciesExp". "Gen2,DelinquenciesExp" is first under presentation hierarchy, but logical level it is associated with is not grand total level.

[39092] Presentation level "Balance Sheet Planing".. "Fee Classification". "Fee Classification". "Gen2,Fee Classification" is first under presentation hierarchy, but logical level it is associated with is not grand total level.

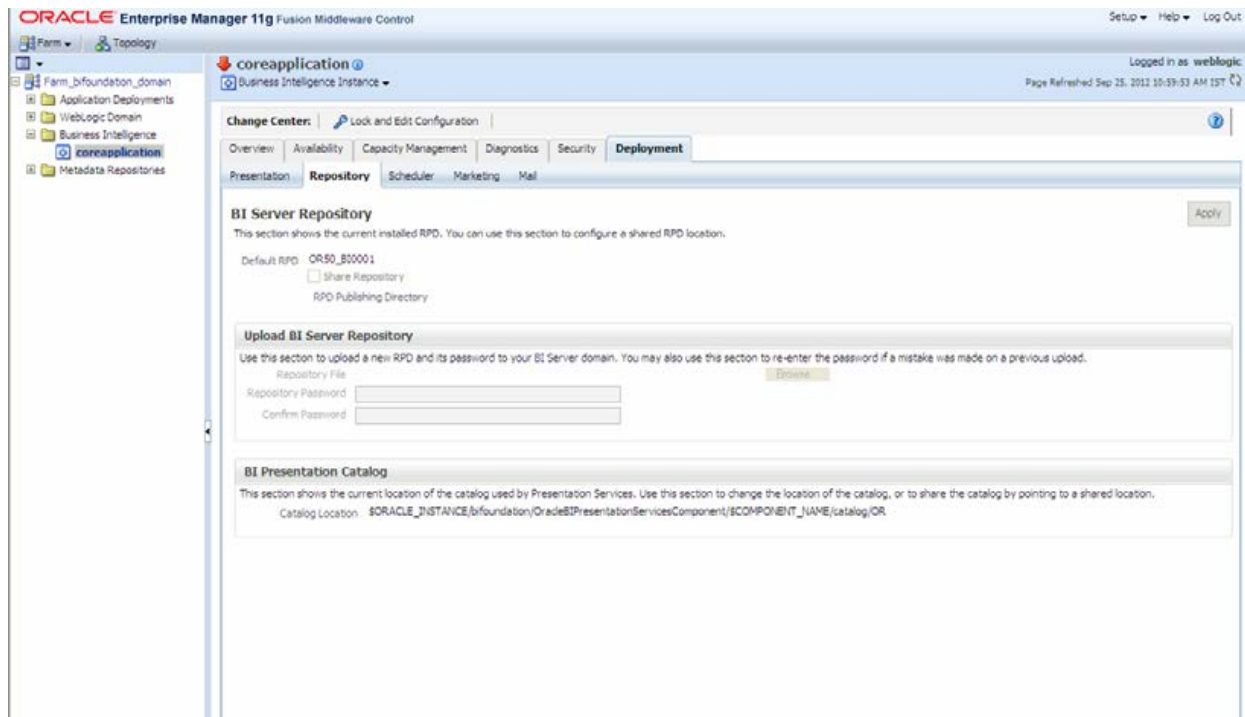
[39092] Presentation level "Balance Sheet Planing".. "Intercompany COA Flag". "Intercompany COA Flag". "Gen2,Intercompany COA Flag" is first under presentation hierarchy, but logical level it is associated with is not grand total level.

[39092] Presentation level "Balance Sheet Planing".. "Sample COA". "Sample COA". "Gen2, Sample COA" is first under presentation hierarchy, but logical level it is associated with is not grand total level.

[39092] Presentation level "Balance Sheet Planing".. "curr\_attrb". "curr\_attrb". "Gen2, curr\_attrb" is first under presentation hierarchy, but logical level it is associated with is not grand total level

[39092] Presentation level "Institutional Performance".. "Segment". "Segment Hierarchy". "Type" is first under presentation hierarchy, but logical level it is associated with is not grand total level.

9. Copy OFS\_PFT\_PACK.zip folder from <FIC\_HOME>/OBIEE of Web layer and place under  
<OBIEE Installed  
Directory>/instances/instance1/bifoundation/OracleBIPresentationService  
sComponent/coreapplication\_obips1/catalog
10. Unzip the OFS\_PFT\_PACK.zip folder.
11. Login to Enterprise Manager. Click Business Intelligence folder at left hand side. Select  
coreapplication and then click on **Deployment** tab.
12. Click **Repository** tab.



**Figure 11: OBIEE Enterprise Manager to deploy Repository12. Click Lock and Edit Configuration.**

The Lock and Edit Configuration Confirmation window is displayed.

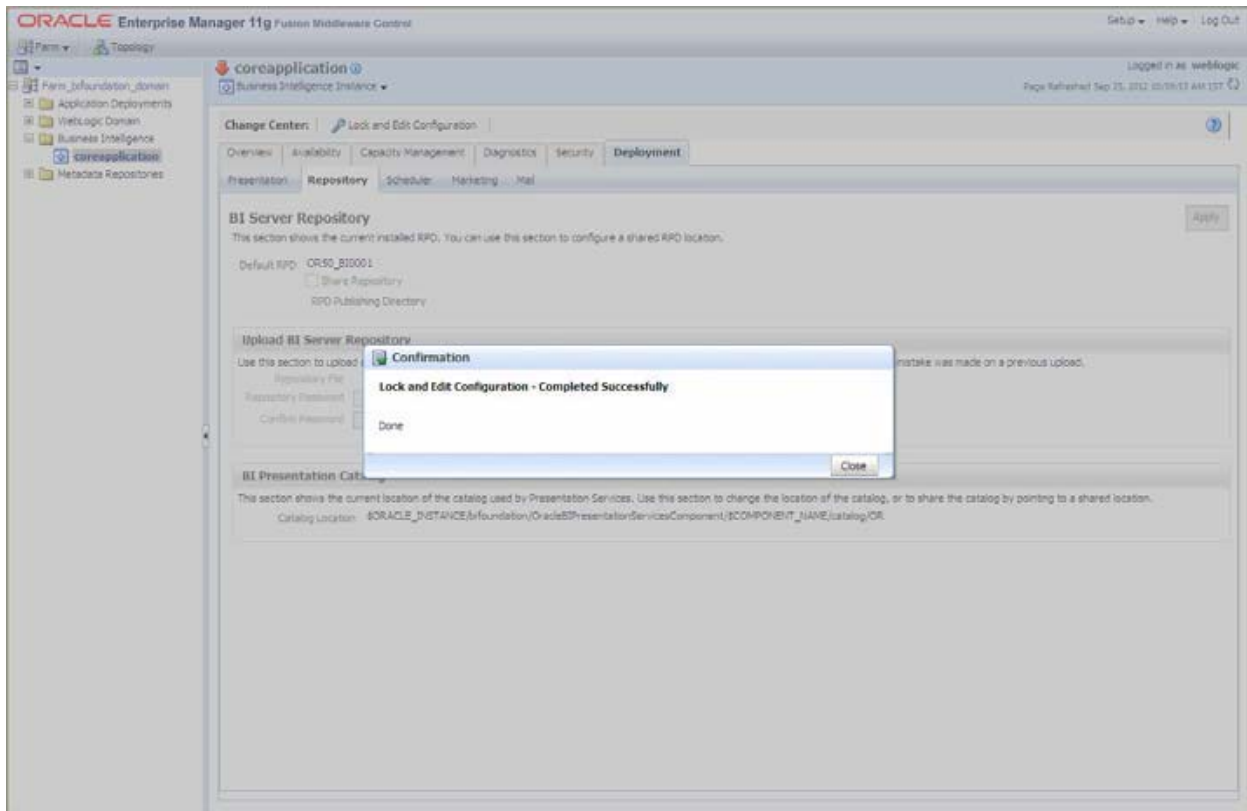
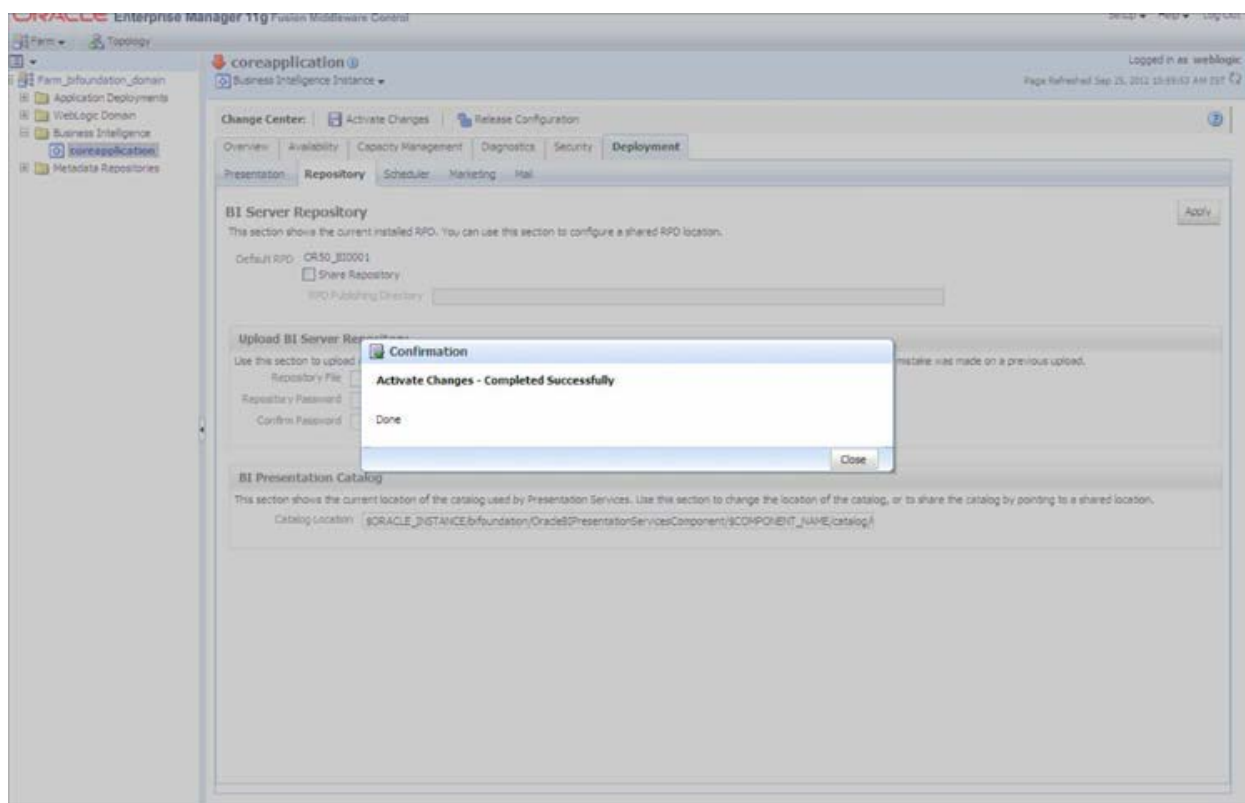


Figure 12: OBIEE Enterprise Lock and Edit Configuration Page

13. Click **Close**.
14. In Upload BI Server Repository section, browse the OR\_6.rpd file from Windows machine.
15. Enter the new repository password in the text boxes repository password and confirm password.
16. In BI Presentation Catalog section, provide the Catalog Location as  
`<OBIEE Installed Directory>/instances/instance1/bifoundation/  
OracleBIPresentationServicesComponent/coreapplication_obips1/catalog/OR_6`
17. Click **Apply**.
18. Click **Activate Changes**. An Activate Changes Confirmation window displays.



**Figure 14: OBIEE Enterprise Activate Changes page**

19. Click **Close**.

20. Modify <OBIEE Installer Directory>

```
/instances/instance1/config/OracleBIPresentationServicesComponent/corea
pplication_obips1/instanceconfig.xml
```

as shown in the following:

From

```
<Security>
```

```
<!--This Configuration setting is managed by Oracle Enterprise
Manager Fusion Middleware Control-->
```

```
<ClientSessionExpireMinutes>210</ClientSessionExpireMinutes>
```

```
</Security>
```

To

```
<Security>
```

```
<!--This Configuration setting is managed by Oracle Enterprise
Manager Fusion Middleware Control-->
```

```
<ClientSessionExpireMinutes>210</ClientSessionExpireMinutes>
```

```
<InIFrameRenderingMode>allow</InIFrameRenderingMode>
```

</Security>

21. **Modify** <OBIEEInstalled Directory>/OracleBI1/bifoundation/web/app/WEB-INF/web.xml

From

```
<servlet-mapping>
<servlet-name>RelatedContent</servlet-name>
<url-pattern>/RelatedContent</url-pattern>
</servlet-mapping>
<login-config>
<auth-method>CLIENT-CERT</auth-method>
</login-config>
```

To

```
<servlet-mapping>
<servlet-name>RelatedContent</servlet-name>
<url-pattern>/RelatedContent</url-pattern>
</servlet-mapping>
<context-param>
<param-name>oracle.adf.view.rich.security.FRAME_BUSTING</
param-name>
<param-value>never</param-value>
</context-param>
<login-config>
<auth-method>CLIENT-CERT</auth-method>
</login-config>
```

Re-start Weblogic

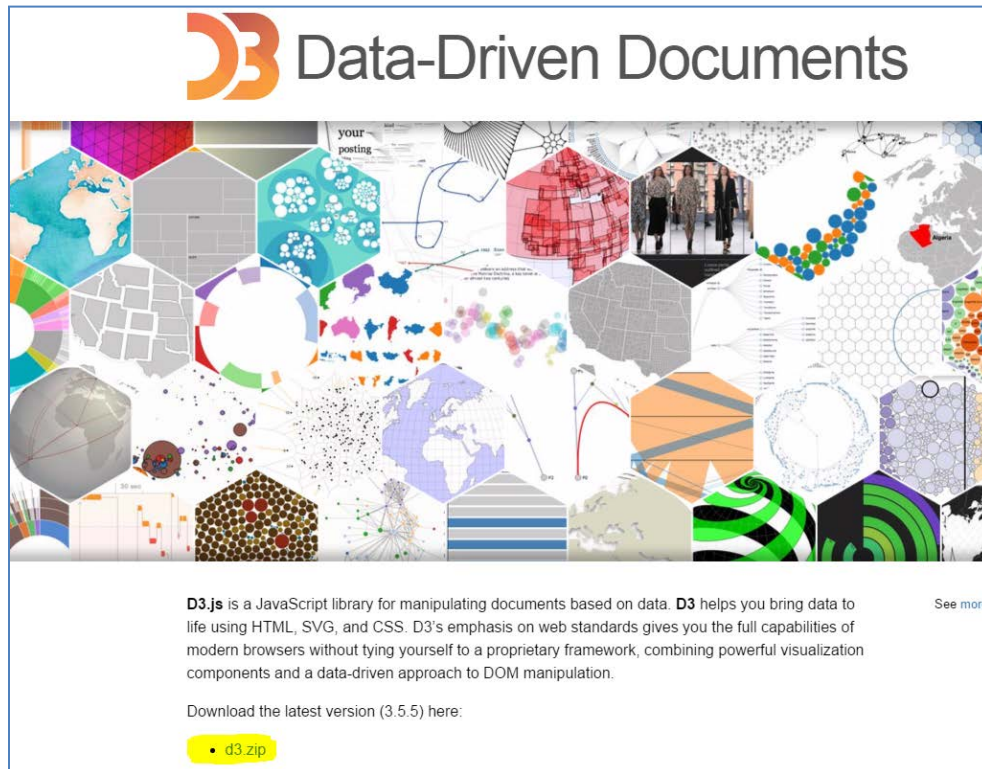
22. **Start** Oracle Process Manager and Notification Server (OPMN) services by executing the following command:

```
./opmnctl startall.
```

from <OBIEE Installed Directory>/instances/instance1/bin directory

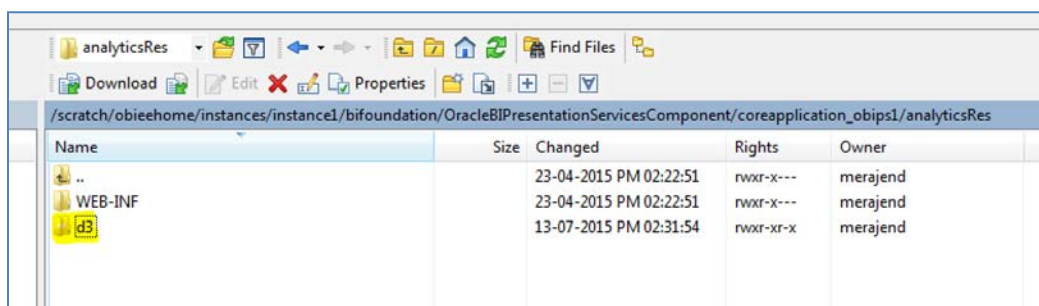
## Appendix D - Steps for deploying D3 to Entitlement Server

1. Download **d3.zip** from <http://d3js.org/> and place it in your local folder.

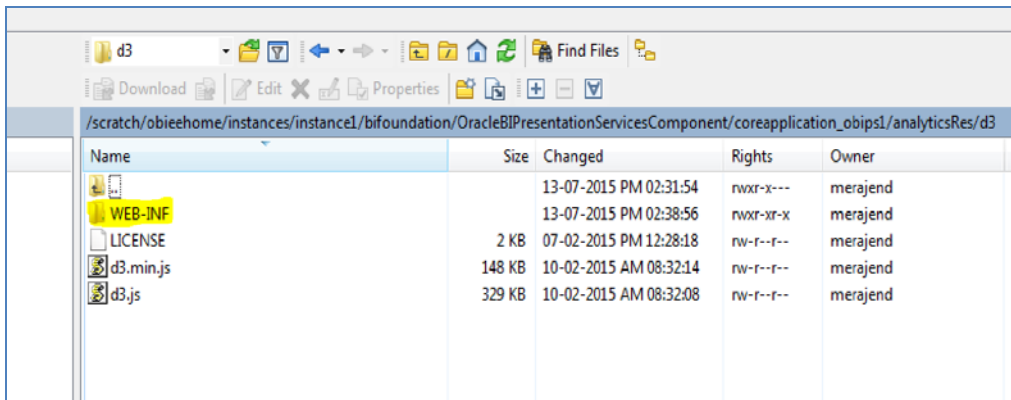


2. Unzip the d3 folder and move this to **analyticsRes** in your entitlement server.

**Note:** To view the Customer Group Structure report, place the `hashmap.jsp` file in d3 folder under **analyticsRes** and restart the application from Weblogic console. `hashmap.jsp` file is the part of Installer.

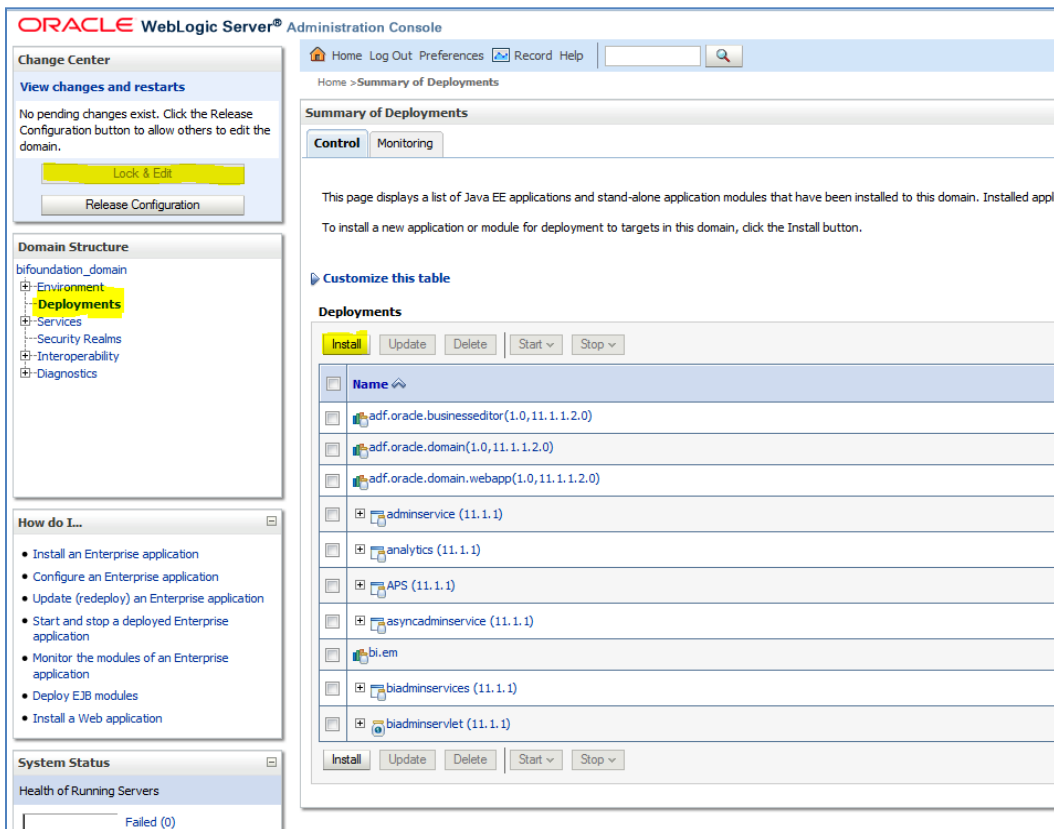


3. Copy the **WEB\_INF** directory from **analyticsRes** into d3 folder.



Name	Size	Changed	Rights	Owner
WEB-INF		13-07-2015 PM 02:31:54	rw-r-x---	merajend
LICENSE	2 KB	13-07-2015 PM 02:38:56	rw-r-xr-x	merajend
d3.min.js	148 KB	07-02-2015 PM 12:28:18	rw-r--r--	merajend
d3.js	329 KB	10-02-2015 AM 08:32:14	rw-r--r--	merajend

4. Login to web logic server, go to **Deployments** in your domain structure, click the **Lock & Edit** button, and select **Install**.



**ORACLE WebLogic Server® Administration Console**

Home > Summary of Deployments

**Summary of Deployments**

**Control** | Monitoring

This page displays a list of Java EE applications and stand-alone application modules that have been installed to this domain. Installed applications can be started, stopped, updated, or deleted. To install a new application or module for deployment to targets in this domain, click the Install button.

**Customize this table**

**Deployments**

Install | Update | Delete | Start | Stop

Name
adf.oracle.businesseditor(1.0,11.1.1.2.0)
adf.oracle.domain(1.0,11.1.1.2.0)
adf.oracle.domain.webapp(1.0,11.1.1.2.0)
admservice (11.1.1)
analytics (11.1.1)
APS (11.1.1)
asynccadmservice (11.1.1)
bi.em
biadmservices (11.1.1)
biadmservlet (11.1.1)

Install | Update | Delete | Start | Stop

**System Status**

Health of Running Servers

Failed (0)

5. Once you click on **install** button, it will take you to the screenshot below where you will paste the full path to the d3 directory , check the checkbox next to **d3(open directory)** and click **Next**.

**Install Application Assistant**

Back Next Finish Cancel

**Locate deployment to install and prepare for deployment**

Select the file path that represents the application root directory, archive file, exploded archive directory, or application module descriptor that you want to install. You can also enter the path of the application directory or file in the Path field.

**Note:** Only valid file paths are displayed below. If you cannot find your deployment files, [upload your file\(s\)](#) and/or confirm that your application contains the required deployment descriptors.

**Path:** /scratch/obiochome/instances/instance1/bifoundation/OracleBIPresentationServicesComponent/coreapplication\_obips1/analyticaRes/d3

**Recently Used Paths:** (none)

**Current Location:** ofsc222590 / scratch / obiochome / instances / instance1 / bifoundation / OracleBIPresentationServicesComponent / coreapplication\_obips1 / analyticaRes

[d3 \(open directory\)](#)

Back Next Finish Cancel

- On the next screen, you'll choose Install this deployment as an application and click Next.

**Administration Console**

Home Log Out Preferences Record Help

Home > Summary of Deployments

**Install Application Assistant**

Back Next Finish Cancel

**Choose targeting style**

Targets are the servers, clusters, and virtual hosts on which this deployment will run. There are several ways you can target an application.

☒ **Install this deployment as an application**

The application and its components will be targeted to the same locations. This is the most common usage.

☐ **Install this deployment as a library**

Application libraries are deployments that are available for other deployments to share. Libraries should be available on all of the targets running their referencing applications.

Back Next Finish Cancel

- On the next screen, select I will make the deployment accessible from the following location and click Finish.

Oracle WebLogic Server Administration Console

Home Log Out Preferences Record Help

Home > Summary of Deployments

**Install Application Assistant**

Back Next Finish Cancel

**Optional Settings**

You can modify these settings or accept the defaults

**General**

What do you want to name this deployment?

Name:

**Security**

What security model do you want to use with this application?

☒ **DD Only:** Use only roles and policies that are defined in the deployment descriptors.

☐ **Custom Roles:** Use roles that are defined in the Administration Console; use policies that are defined in the deployment descriptor.

☐ **Custom Roles and Policies:** Use only roles and policies that are defined in the Administration Console.

☐ **Advanced:** Use a custom model that you have configured on the realm's configuration page.

**Source accessibility**

How should the source files be made accessible?

☒ **Use the defaults defined by the deployment's targets**

Recommended selection.

☐ **Copy this application onto every target for me**

During deployment, the files will be copied automatically to the managed servers to which the application is targeted.

☒ **I will make the deployment accessible from the following location**

Location:

Provide the location from where all targets will access this application's files. This is often a shared directory. You must ensure the application files exist in this location and that each target can reach the location.

Back Next Finish Cancel

8. On this screen, you will have to click on **Activate Changes**.

Oracle WebLogic Server Administration Console

Home Log Out Preferences Record Help

Home > Summary of Deployments

**Change Center**

View changes and restarts

Pending changes exist. They must be activated to take effect.

**Domain Structure**

- bifoundation\_domain
  - Environment
  - Deployments**
  - Services
  - Security Realms
  - Interoperability
  - Diagnostics

**Summary of Deployments**

**Control** Monitoring

This page displays a list of Java EE applications and stand-alone application modules that have been installed to this domain. Installed applications and modules can be started, stopped, or undeployed.

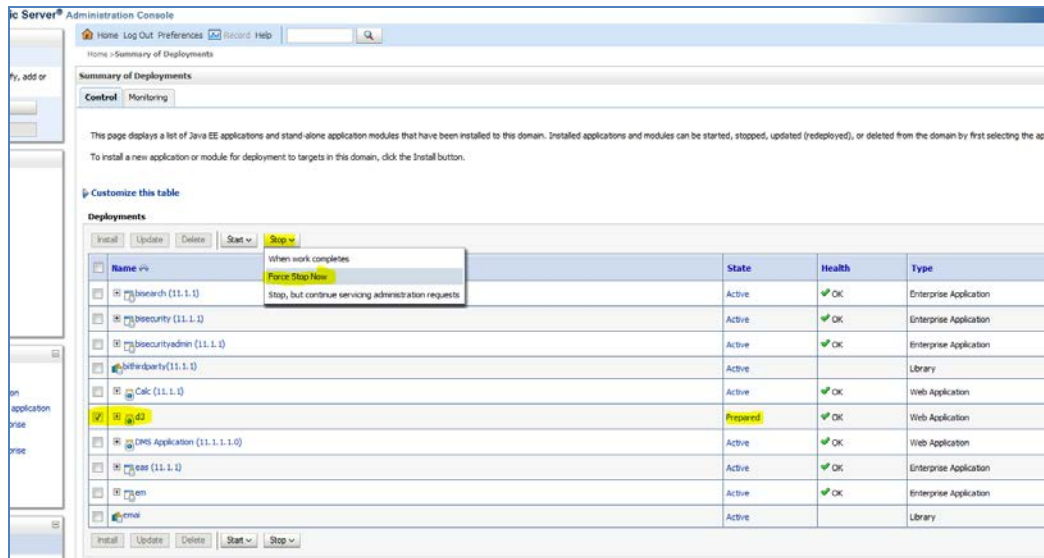
To install a new application or module for deployment to targets in this domain, click the Install button.

**Customize this table**

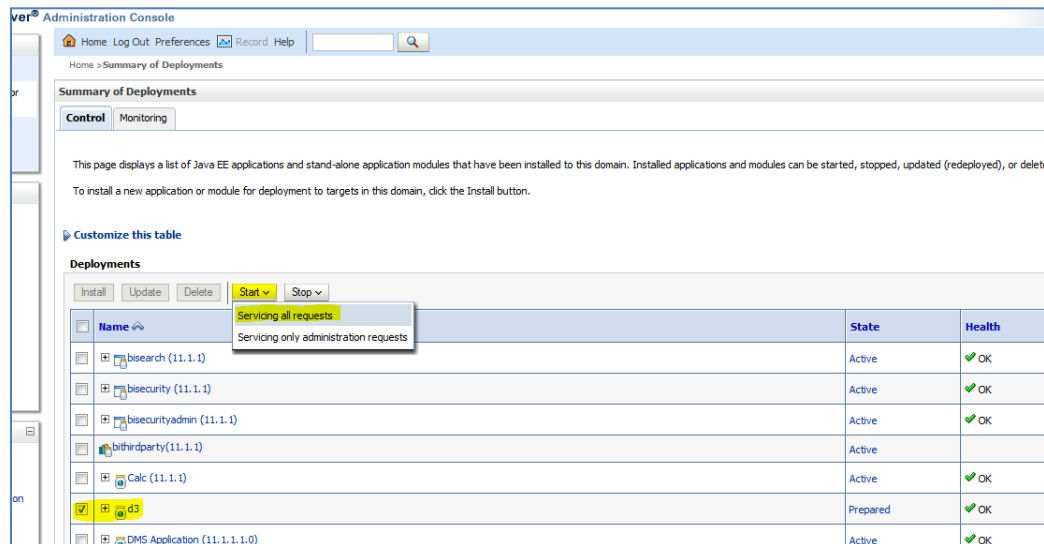
**Deployments**

Name	State
adf.oracle.businesseditor(1.0,11.1.1.2.0)	Active
adf.oracle.domain(1.0,11.1.1.2.0)	Active

9. After activating the changes, the application will now be in a **Prepared** state, as in the screenshot below. You will have to stop the application by checking the checkbox next to it and selecting **Force Stop Now** from **Stop** menu.



10. We can start the application by checking the checkbox next to it and selecting **Servicing all requests** from the **Start** menu.



11. The application will now change to an **Active** state and you're finished here.

Summary of Deployments				
Control Monitoring				
<p>This page displays a list of Java EE applications and stand-alone application modules that have been installed to this domain. Installed applications and modules can be started, stopped, updated (redeployed), or deleted from the domain by first selecting the application or module.</p> <p>To install a new application or module for deployment to targets in this domain, click the Install button.</p>				
Customize this table				
Deployments				
Install Update Delete Start v Stop v				
<input type="checkbox"/>	Name	State	Health	Type
<input type="checkbox"/>	BI BIsearch (11.1.1)	Active	OK	Enterprise Application
<input type="checkbox"/>	BI BIsecurity (11.1.1)	Active	OK	Enterprise Application
<input type="checkbox"/>	BI BIsecurityadmin (11.1.1)	Active	OK	Enterprise Application
<input type="checkbox"/>	BI BIthirdparty (11.1.1)	Active	OK	Library
<input type="checkbox"/>	BI BI Calc (11.1.1)	Active	OK	Web Application
<input type="checkbox"/>	BI BI G3	Active	OK	Web Application
<input type="checkbox"/>	BI BI PMP Application (11.1.1.1.0)	Active	OK	Web Application

## Appendix E – Mapview Configurations

This section provides information on prerequisites, creating the mapviewer NAVTEQ data source, configuration edits and server starting.

---

**NOTE:** This is just a sample configuration working on sample data provided by NAVTEQ.

---

This section covers the following topics:

- [Prerequisites](#)
- [Creating the Mapviewer NAVTEQ Data source](#)
- [Creating the NAVTEQ Schema](#)
- [Configuration Edits and Server Starting](#)
- [Loading FSI\\_LOCATION\\_MAP\\_COORD for viewing NAVTEQ Maps](#)

### Prerequisites

NAVTEQ database dump can be imported only into an Oracle 11g database. If you have no other option than using a 10g version, contact OBIEE/Mapviewer Product Management.

### Creating the Mapviewer NAVTEQ Data source

Ensure that you have a connection to 11g Oracle database from the machine where your OBIEE platform is installed.

Create a NAVTEQ schema within that database for holding the NAVTEQ spatial data.

To create NAVTEQ schema, perform the steps as explained in the following section.

### Downloading the Mapviewer NAVTEQ Database Dump

To download the Mapviewer NAVTEQ Database Dump, follow these steps:

1. Access the SampleApp\_Navteq\_dmp.zip file from the SampleApp download location (127MB)  
<http://www.oracle.com/technetwork/middleware/bi-foundation/obieesamplesarchive-2026956.html>
2. Download and unzip the SampleApp\_Navteq\_dmp.zip file that contains an Oracle Database export file named  
`obiee_navteq.dmp`

### Creating NAVTEQ User

To create a NAVTEQ user, follow these steps:

1. Start a SQL\*Plus session to the Oracle Database as a user with system or DBA privileges.
2. Run the following script:

```
create user obiee_navteq identified by obiee_navteq default tablespace
users quota unlimited on users;

grant "connect" to obiee_navteq;

grant "resource" to obiee_navteq;
```
3. Once the script is executed, verify whether you can connect to the newly created user.

---

**NOTE:** The OBIEE\_NAVTEQ user creation script defaults with the password obiee\_navteq (same as user name) within the script. It is recommended that you keep this value unchanged to simplify configuration. Oracle OBIEE 11G SampleApp Deployment Instructions 32.

---

### Creating the NAVTEQ Schema

To create NAVTEQ Schema, follow these steps:

#### Importing the database dmp file

1. Import the Oracle Database export file - obiee\_navteq.dmp into the obiee\_navteq schema using the following import command, from the command line (Command Prompt in Windows):  

```
c:\> imp obiee_navteq/obiee_navteq@connectString file=obiee_navteq.dmp FULL=Y
```
2. connectString is the connection string to your Oracle Database 11g where the user obiee\_navteq was created in the step mentioned earlier. Wait for the import process to complete, once successfully completed, login on your DB as obiee\_navteq/obiee\_navteq and validate that you can view the schema tables and some data.

#### Inserting Extra Spatial Metadata

1. Start a SQL\*Plus session to the Oracle Database and connect as user obiee\_navteq.

For example: `c:\>sqlplus obiee_navteq/obiee_navteq@connectString`

2. Run the following script:

```
INSERT INTO user_sdo_maps SELECT * FROM my_maps;
INSERT INTO user_sdo_themes SELECT * FROM my_themes;
INSERT INTO user_sdo_styles SELECT * FROM my_styles;
INSERT INTO user_sdo_cached_maps SELECT * FROM my_tile_cache;
Commit;
```

### Configuration Edits and Server Starting

Confirm that WLS server and WLS managed servers are up and running, and ensure that OMPNCTL is not running.

---

**NOTE:** Neither OBIS nor OBIPS are running.

---

#### MapViewConfig.xml Edits (Optional)

1. Open the Mapviewer console using the following URL:  
`http://10.228.235.83:9704/mapviewer` (replace 10.228.235.83:9704 with the correct IP address and port number on your install).
2. Click **Admin**.
3. Login with the username/password that you provided while installing the product.
4. Click **Configuration**. This opens the mapViewConfig.xml on your setup.

5. Make the following updates to the xml file.

### <security\_config> (Optional)

In the <security\_config> property of this file, make the following changes:

1. Change the <proxy\_enabled\_hosts> property to the following: Substitute the hostname, IP address and port to the correct values on your setup.

<proxy\_enabled\_hosts>

http://dadvmc0508.us.oracle.com:9704/mapviewer

http://dadvmc0508.us.oracle.com:9704/,http://10.228.235.83:9704/

http://10.228.235.83:9704/mapviewer

</proxy\_enabled\_hosts>

2. Substitute any entries with these tags with the following property entries:

<disable\_direct\_info\_request> true </disable\_direct\_info\_request>

<disable\_info\_request> true </disable\_info\_request>

<disable\_csf>true</disable\_csf>

<enforce\_security\_role> true </enforce\_security\_role>

Oracle OBIEE 11G SampleApp Deployment Instructions 33

### Predefined Data Sources

1. At the end of the file, in the section named Predefined Data Source, add the following data source entry.
2. Replace the IP address, SID, and port to the correct values of the database where the obiee\_navteq schema has been created in the above steps.

```
<map_data_source name="OBIEE_NAVTEQ_SAMPLE"
```

```
  jdbc_host="10.229.147.238" (use your db ip)
```

```
  jdbc_sid="orcl" (use your db sid)
```

```
  jdbc_port="1521" (use your db port)
```

```
  jdbc_user="obiee_navteq"
```

```
  jdbc_password="!obiee_navteq" (use your selected password if different  
  from OOB)
```

```
  jdbc_mode="thin"
```

```
  number_of_mappers="3"
```

```
  allow_jdbc_theme_based_foi="false" />
```

---

**NOTE:** Ensure that all tags have been closed correctly and also the above data source is not within the comments section (ensure that it is outside the comments section which is represented by <!-- .. -->).

---

### Save and Restart, Verify

Click **Save** and **Restart** button at the bottom of the file.

1. Verify whether you can view OBIEE\_NAVTEQ\_SAMPLE as an entry in data sources.

2. Then after you are successful, there will entry in DataSources section.
3. Login to **Analytic screen>Administration**.
4. Click **Manage map Data**.
5. Click **Import Layer** and then choose OBIEE\_COUNTRY.
6. Choose **Preview MAP** as OBIEE\_WORLD\_MAP\_FAST.
7. Same for OBIEE STATE.
8. Select **Background Maps**.
9. Use import Background maps and chosen OBIEE\_WORLD\_MAP\_FAST.
10. Edit the same, add layer OBIEE\_COUNTRY and then OBIEE\_STATE. While choosing, chose the location OBIEE\_WORLD\_MAP for higher Zoom value.
11. Select the zoom level for country 0 and for country 2...15.
12. Navigate back to Layers tab.
13. Edit OBIEE\_COUNTRY and OBIEE\_STATE.
14. By adding BI Key Columns
15. For Country>
  - i. Choose Institutional Performance>Geography>Country Description.
  - ii. Choose Institutional Performance>Branch>Branch Country Description.
  - iii. Choose Retail Performance>Geography>Country Description.
16. For State>
  - i. Choose Institutional Performance>Geography>State Description.
  - ii. Choose Institutional Performance>Branch>Branch State Description.
  - iii. Choose Retail Performance>Geography>State Description.
17. Once configuration.xml file is restarted, click **Data Sources**.

## Loading FSI\_LOCATION\_MAP\_COORD for viewing NAVTEQ Maps

For NAVTEQ Maps to work, it requires the location data in our atomic schema to be in sync with the map metadata in NAVTEQ schema. This is achieved through a new table FSI\_LOCATION\_MAP\_COORD, the load process of which is described as follows.

Populate FSI\_LOCATION\_MAP\_COORD based on DIM\_LOCATION data itself, but description and codes should come from tables OBIEE\_COUNTRY, OBIEE\_STATE, OBIEE\_CITY (from the DB schema configured for Maps, 'OBIEE\_NAVTEQ', for example in this case)

respectively for Country, State and City, and n\_location\_skey should be the corresponding n\_location\_skey from DIM\_LOCATION.

For Instance, let us consider the following data from DIM\_LOCATION.

N_LOCATION_SKEY	1
V_LOCATION_CODE	HAW
V_COUNTRY_CODE	USA
V_COUNTRY_DESC	United States
V_STATE_CODE	HI
V_STATE_DESC	Hawaii
V_CITY_CODE	CITI1

V_CITY_DESC	Honolulu
V_ZIP_CODE	96813

**Table: DIM\_LOCATION**

Now, to populate the following columns in FSI\_LOCATION\_MAP\_COORD

n_location_skey =	1
v_country_code OBIEE_COUNTRY.ISO_COUNTRY_CODE	= USA
v_country_code_map OBIEE_COUNTRY.ISO_COUNTRY_CODE	= USA
v_country_desc = OBIEE_COUNTRY.NAME	United States
v_state_code OBIEE_STATE.ISO_CTRY_CD_STATE_ABBRV	= USA_HI
v_state_code_map OBIEE_STATE.ISO_CTRY_CD_STATE_ABBRV	= USA_HI
v_state_desc = OBIEE_STATE.STATE_NAME	HAWAII
v_city_code OBIEE_CITY.CTRY_CD3_STATE_ABBRV_CITY	= USA_HI_Honolulu
v_city_code_map OBIEE_CITY.CTRY_CD3_STATE_ABBRV_CITY	= USA_HI_Honolulu
v_city_desc = OBIEE_CITY.CITY_NAME	HONOLULU
v_zip_code =	96813

**Table: FSI\_LOCATION\_MAP\_COORD**

## Appendix F

### Frequently Asked Questions

#### What checks does the 8.0.2.0.0 Release patch perform?

- Environment Check- As part of environment check, it performs Java validation, Environment Variables validation, OS specific validation, DB specific validation, and it shuts down all OFSAAI Services (Infrastructure Server, ICC Server, and back-end services).
- Post Install check- As part of Post install check, it checks if OFSAAI services can be successfully started.

#### Which version of ERwin Data Modeler does OFSAAI support?

OFSAAI now supports ERwin version 9.2 and 9.5 generated xmls in addition to ERwin 4.1, ERwin 7.1, ERwin 7.3 and ERwin 9.0 formats.

#### What should I do for viewing the log files in Debug level for troubleshooting?

By default, the log level is set as INFO. You need to manually change it to Debug to view the log files in debug level. Based on your requirement, you can change the log level to Warn, Error, or Fatal as well.

1. Navigate to *\$FIC\_HOME/conf* in the APP layer of your OFSAAI installation.
- Change the **priority value** to **Debug** in the *RevLog4jConfig.xml* file.

For example:

```
<root>
  <priority value ="debug" />
  <appender-ref ref="ConsoleAppender1"/>
</root>
```

- Change the value of **LOGGERLEVEL** in the *DynamicServices.xml* file from **20** to **0**. (**20** is the value for Info and **0** for Debug.)

---

**NOTE:** For multi-tier installation, you need to change the log level to Debug in the *DynamicServices.xml* and *RevLog4jConfig.xml* files, which are present in *\$FIC\_APP\_HOME/conf*, *\$FIC\_DB\_HOME/conf*, and *\$FIC\_WEB\_HOME/conf* as well.

---

2. Navigate to *\$FIC\_WEB\_HOME/webroot/conf* and change the **priority value** to **Debug** in the *ExportLog4jConfig.xml*, *MDBLogger.xml*, and *PR2Logger.xml* files for viewing log files in Debug level for the modules Archive/Restore, Metadata Browser and RRF respectively.
3. Generate the application EAR/WAR file and redeploy the application onto your configured web application server. For more information on generating and deploying EAR / WAR file, refer to the

*Post Installation Configuration* section in [Oracle Financial Services Profitability Management Application Pack Installation Guide Release 8.0.0.0.0](#)

4. Restart the OFSAI Services (APP and WEB). For more information, refer to the *Start/Stop Infrastructure Services* section in [Oracle Financial Services Profitability Management Application Pack Installation Guide Release 8.0.0.0.0](#).

### **What should I do if “What if” screen is not displayed completely after clicking Create Scenario button?**

1. `<InIFrameRenderingMode>allow</InIFrameRenderingMode>`  
entry needs to be added in `<Security></Security>` tags in following file:  
`<MIDDLEWARE_HOME>/instances/instance1/config/OracleBIPresentationServicesComponent/coreapplication_obips1/instanceconfig.xml`
2. `<context-param>`  
`<param-name>oracle.adf.view.rich.security.FRAME_BUSTING</param-name>`  
`<param-value>never</param-value>`  
`</context-param>`  
entries need to be added between `<servlet-mapping ></servlet-mapping>` and `<login-config></login-config>` tags in following file:  
`<Middleware_Home>\oracleBI1\bifoundation\web\app\WEB-INF\web.xml`

### **What should I do If Account Profile Report is displaying error?**

To work some reports in OBIEE (11.1.1.9.5), set `EVALUATE_SUPPORT_LEVEL` to '2' inside `NQSCfg.INI` file.

Path of `NQSCfg.INI` file is mentioned below:

`/scratch/obiee11g/obiee11g_new/instances/instance1/config/OracleBIServerComponent/coreapplication_obis1`



OFS Profitability Management  
8.0.2.0.0 Installation and Configuration Guide

Oracle Corporation  
World Headquarters  
500 Oracle Parkway  
Redwood Shores, CA 94065  
U.S.A.

Worldwide Inquiries:  
Phone: +1.650.506.7000  
Fax: +1.650.506.7200  
[www.oracle.com/us/industries/financial-services/](http://www.oracle.com/us/industries/financial-services/)

Copyright © 2015 Oracle Financial Services Software Limited. All rights reserved.

No part of this work may be reproduced, stored in a retrieval system, adopted or transmitted in any form or by any means, electronic, mechanical, photographic, graphic, optic recording or otherwise, translated in any language or computer language, without the prior written permission of Oracle Financial Services Software Limited.

Due care has been taken to make this 8.01.0.0 Installation Guide and accompanying software package as accurate as possible. However, Oracle Financial Services Software Limited makes no representation or warranties with respect to the contents hereof and shall not be responsible for any loss or damage caused to the user by the direct or indirect use of this 8.01.0.0 Installation Guide and the accompanying Software System. Furthermore, Oracle Financial Services Software Limited reserves the right to alter, modify or otherwise change in any manner the content hereof, without obligation of Oracle Financial Services Software Limited to notify any person of such revision or changes.

All company and product names are trademarks of the respective companies with which they are associated.